



# ECLOF BRAZIL

In Brazil, ECLOF is known as CEADe (Centro Ecumênico de Apoio ao Desenvolvimento). CEADe is a small MFI in the state of Bahia registered as a not-for-profit foundation. From two offices in Salvador de Bahia and Alagoinhas, CEADe serves about 1000 clients. Most clients reside in rural areas, others in the favelas around Salvador. CEADe caters to their micro businesses and smallholder farms, providing financial and related non-financial services.



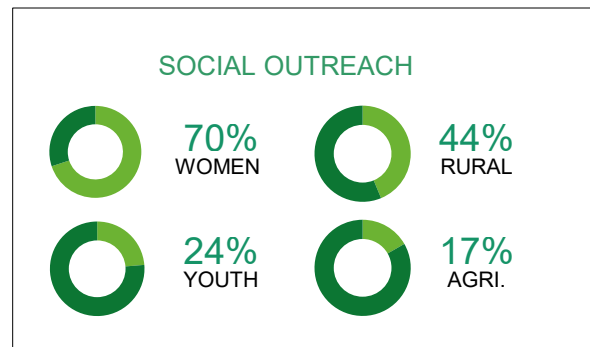
## COUNTRY INDICATORS

Population in million	209
Gross National Income (GNI) per Capita in USD	15,820
Human Development Index Rank	79 out of 187
Percentage of Population Below Poverty Line	4%
Percentage of Rural Population	13%



## OPERATIONAL HIGHLIGHTS

Founded in	1984
Legal Form	Civil Society Org. of Public Interest
Number of Branches	2
Number of Staff	9
Number of Loan Officers	5
Percentage of Female Staff	57%
Gross Loan Portfolio in million USD	0.3
Number of Clients	989
Portfolio at Risk 30 days	15%
Operational Self-sufficiency	126%



## POVERTY OUTREACH

LOAN TYPE	Individual	Group	Institutional
Average Loan Size in USD	912	287	0
Average Loan Size / GNI per Capita	6%	2%	-
MIX* Classification	Low End	Low End	-

\* MIX Market classifies a country's MFIs into three categories (low-end, broad, and high-end) depending on the segment of the population they serve by relating the average loan size to local income levels (GNI per capita).



\* all as of 2018



PROMOTE SOCIAL  
JUSTICE & HUMAN  
DIGNITY  
[www.eclof.org](http://www.eclof.org)

### ECLOF Brazil - CEADe

Av. Miguel Calmon, Edifício Ouro Preto, 8° andar,  
salas 802 e 803, CEP 40.015-010, Comércio  
Salvador de Bahia, Brazil  
WEBSITE [www.ceade.org.br](http://www.ceade.org.br)  
EMAIL [ceade@ceade.org.br](mailto:ceade@ceade.org.br)